



# Levelling the Playing Field

## Making Partnerships Work for The Poor in Forest Plantations

San Afri Awang  
Herry Purnomo  
Wahyu Wardhana  
Rennaldi



### Challenges

- Fair partnership schemes between communities and Musi Hutan Persada company operating in this area
- Benefit sharing among community members
- Community land access

### Key project activities

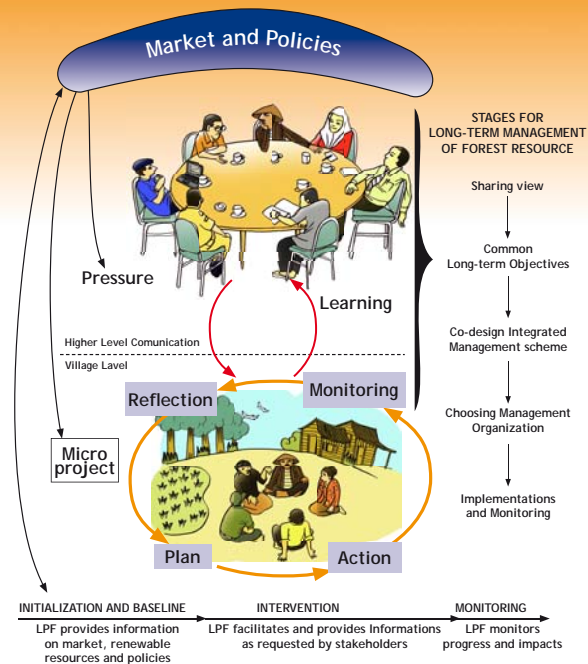
- Baseline survey
- Capacity building
- Envisioning partnership scenarios with simulations and games
- Facilitating multi-stakeholder forum of "Sebahu Sejalan" and focus group discussions to improve the partnership
- Impact monitoring

### Findings

- The forest plantation contributes significant income to community livelihoods besides rubber
- Money is an important trigger for reforming institutions
- Evolving and diverse perceptions inside the company and communities regarding the partnerships
- The emergence of new land-lords and local elites from the partnership scheme

### On-Going Results and Impacts

- The multi-stakeholder forum, "Sebahu Sejalan" supported by communities, Musi Hutan Persada and local government, is working
- Fairer partnership schemes are being drafted
- Community protocols and institutions for benefit sharing and participation in forest plantation management are being developed



Contact persons:  
 • San Afri Awang: saawang@ugm.ac.id  
 • Herry Purnomo: h.purnomo@cgiar.org  
 • Wahyu Wardhana: wwardhana@ugm.ac.id  
 • Rennaldi: 0812 787 5633

Philippe Guizol  
 LPF Project Leader  
 Email: p.guizol@cgiar.org

Thibaut Portevin  
 EU Project Officer - Natural Resources  
 Email: Thibaut.PORTEVIN@cec.eu.int

Secretariate of Forum "Sebahu Sejalan"  
 Jl. R.A. Kartini RT 04/II No.24  
 Kelurahan Pasar II, Muara Enim 31315  
 Telp.0734-423834

