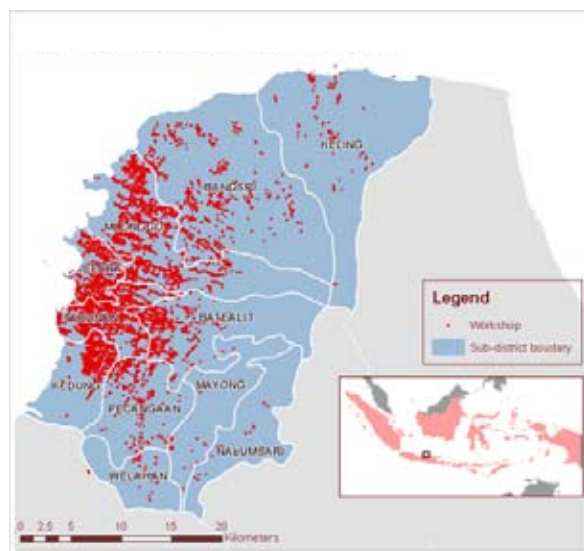


## Furniture Workshop Locations in Jepara



(Roda *et al.* 2007)

The Furniture Value Chain Project is implemented by CIFOR in partnership with the Jepara Multistakeholder Forum (Forum Rembug Klaster or FRK), the Jepara District government, the Forestry Research Development Agency (FORDA) of the Ministry of Forestry and Bogor Agricultural University (IPB).

For further information please contact:  
 Dr. Herry Purnomo ([h.purnomo@cgiar.org](mailto:h.purnomo@cgiar.org))  
 Center for International Forestry Research (CIFOR)  
 Jalan CIFOR, Situ Gede  
 Bogor 16115, Indonesia  
 Tel. 62-251-8622622  
 Fax. 62-251-8622100

<http://www.cifor.cgiar.org/furniture>



## Rantai Nilai Mebel Furniture Value Chain



FORUM  
REMBUG  
KLASTER



Action research to improve value chain efficiency and enhance livelihoods

- Did you know that the financial crisis in 2008 has brought down the value of Indonesia's furniture exports by half?
- Did you know that since the 1998 furniture industry boom, mass production of low-value furniture for national and international markets has seriously compromised the sustainability of mahogany and teak plantations?
- Did you know that inefficiencies and power imbalances throughout the Indonesian furniture industry value chain result in poor incentives for wood producers and small-scale furniture producers as well as misuse of wood resources?

A furniture value chain tracks the value added to timber as it moves from grower through furniture maker to market. CIFOR and partners have embarked on a 5-year project to improve the structure and function of the furniture industry in the Indonesian district of Jepara. The Furniture Value Chain project is funded by the Australian Centre for International Agricultural Research and will run until 2013.

Researchers and stakeholders will assess efficiency in the furniture value chain, and develop methods to improve efficiency, and the capacity of relevant institutions to manage the chain. Improved governance and efficiency will secure thousands of furniture enterprises, help sustain 170,000 jobs and enhance incomes for small-scale producers, positioning them to play a greater decision-making within the value chain.

Jepara is located in Central Java, Indonesia, a key location for job creation and wood consumption. Furniture making is the backbone of the local economy and culture.



Furniture products end up in domestic showrooms or shipped for export.



Smoothly finished, end products get packed for shipping – mostly by female laborers.



The furniture value chain: From trees to log yards, to sawmills and producers.



Penelitian kaji-tindak untuk meningkatkan efisiensi rantai nilai dan penghidupan pengrajin

- Tahukah Anda bahwa krisis finansial tahun 2008 telah mengakibatkan penurunan nilai ekspor mebel Indonesia hingga 50 persen? Dan sejak *booming* industri mebel tahun 1998, produksi massal mebel bernilai rendah untuk pasar nasional dan internasional telah menghadirkan ancaman serius terhadap keberlanjutan hutan tanaman mahoni dan jati.
- Tahukah Anda bahwa ketidakefisienan dan ketimpangan relasi kekuasaan yang terdapat pada seluruh rantai nilai industri mebel di Indonesia juga memberikan disinsentif bagi petani hutan dan pengrajin mebel, serta penyalahgunaan sumber-sumber kayu?

Oleh karena itu, “Penelitian kaji-tindak mebel mahoni dan jati untuk meningkatkan efisiensi rantai nilai dan meningkatkan penghidupan” atau disebut juga *Furniture Value Chain (FVC) Project*, sebuah proyek penelitian yang didanai oleh Pusat Penelitian Pertanian Internasional Australia (*Australian Centre for International Agricultural Research* atau ACIAR) dan dilangsungkan sejak 2008 hingga 2013, mengupayakan terciptanya perbaikan struktur dan fungsi industri mebel Jepara dari perolehan materi kayu hingga proses pemasaran.

Peneliti dan pihak-pihak terkait akan menilai efisiensi rantai nilai mebel, mengembangkan dan melaksanakan rencana untuk meningkatkan efisiensi, kapasitas institusi, dan nilai tambah mebel. Perbaikan dalam bentuk pemerintahan dan efisiensi dapat menghidupi ribuan pengusaha mebel, mempertahankan 170.000 lapangan kerja, meningkatkan penghasilan pengrajin skala kecil, dan memberikan mereka peran yang lebih besar di dalam rantai nilai.